



MicroUnit series module

Configuration program

program help

W_mu v. 2.00.00



The W_mu program is intended for configuration and control of modules from the MicroUnit series. The modules are equipped with an RS-485 communication interface. Communication takes place optionally using the AIBus-2 or Modbus RTU protocol. The configuration of the modules is done by software over the RS-485 communication line. Configuration data is stored in the module in EEPROM type memory. This memory can be hardware-locked against overwriting (interference or unwanted writing) with the switch SW1.1=ON. To configure the module with the configuration program, the configuration memory must be unlocked (SW1.1=OFF). A detailed description of the SW switch is provided for the specific MicroUnit module.

The program consists of the following files:

- W_mu.exe – custom configuration program
- W_mu.ini – program initialization parameters
- W_mu_Help.pdf - program help (this file)

Main window of the program.

After starting the program, the main window with the initial menu opens.



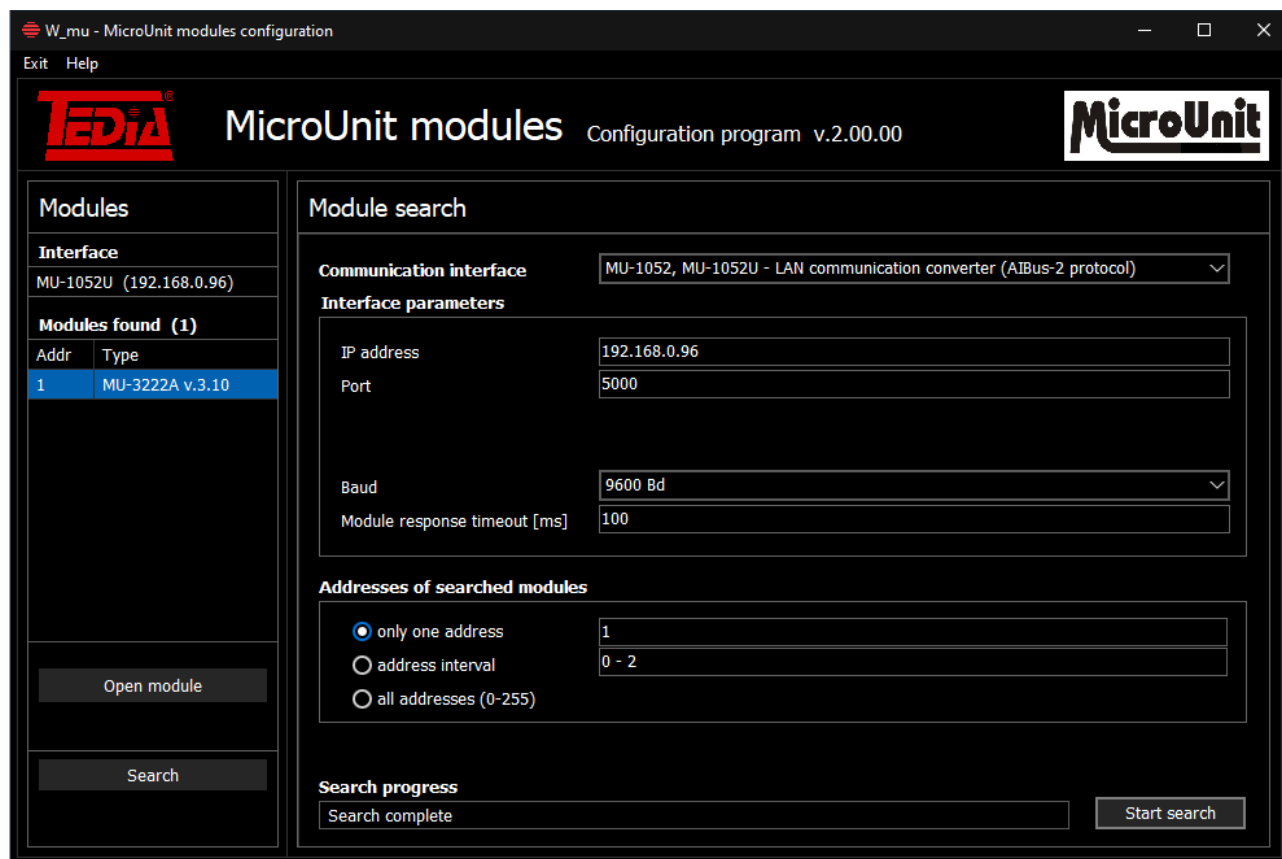
Search – button to open a window with a search for connected modules

Help menu - menu to open the About and Help windows (this file)

Exit menu – exit the program

Module search window.

Before configuration, it is necessary to initialize the connection with the given configured module.



W_mu - MicroUnit modules configuration

Exit Help

TEDiA **MicroUnit modules** Configuration program v.2.00.00 **MicroUnit**

Modules	
Interface	
MU-1052U (192.168.0.96)	
Modules found (1)	
Addr	Type
1	MU-3222A v.3.10

Open module

Search

Module search

Communication interface MU-1052, MU-1052U - LAN communication converter (AIBus-2 protocol) ▼

Interface parameters

IP address 192.168.0.96

Port 5000

Baud 9600 Bd ▼

Module response timeout [ms] 100

Addresses of searched modules

☒ only one address 1

☐ address interval 0 - 2

☐ all addresses (0-255)

Search progress

Search complete

Start search

Search for connected modules:

Communication interface – selection of the communication interface through which the modules are connected

Interface parameters – communication interface settings (specific parameters are determined by the selected communication interface)

Addresses of searched modules – defining searched addresses of modules

Search progress – information about the current status of the module search

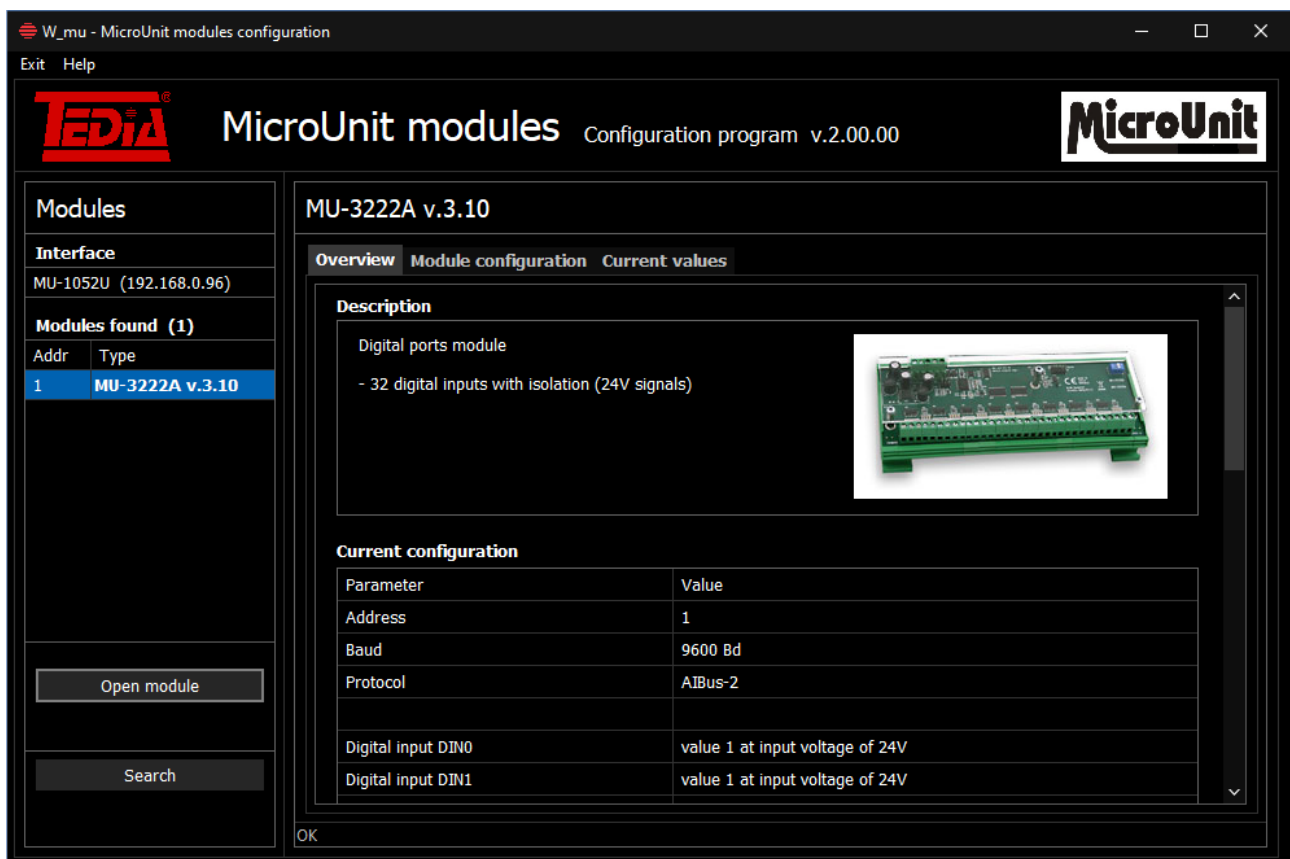
Start search – button to start searching for connected modules

Connected modules:

Open module – button to open the configuration window of the selected found module

Module configuration window - Overview tab.

After opening the configuration window, the current configuration is loaded from the module and displayed on the Overview tab.



Description:

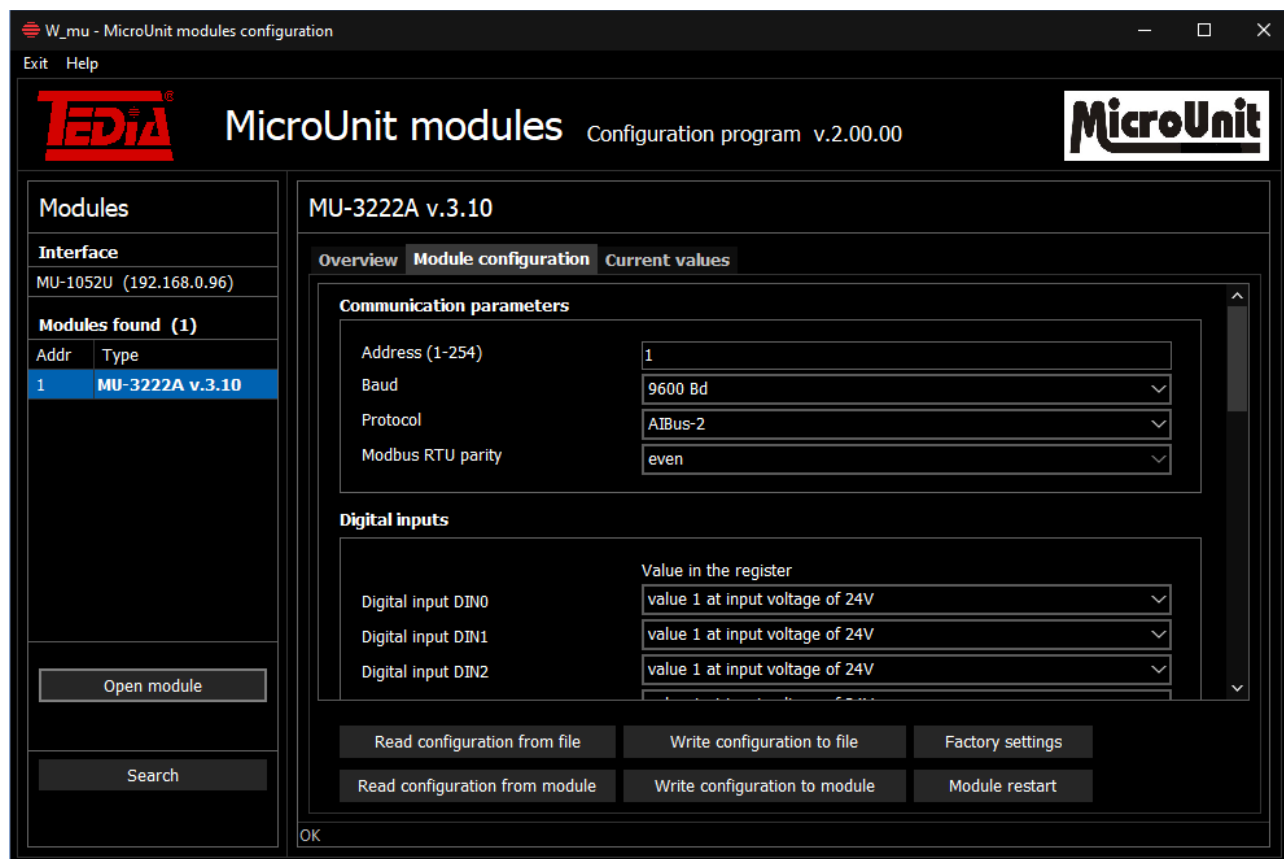
Brief description, use and appearance of the configured module.

Current configuration:

Overview of the settings of all configuration parameters of the module (specific parameters are determined by the type of module).

Module configuration window – Module Configuration tab.

Module configuration (specific configuration parameters are determined by module type).



Read configuration from file – button for loading the saved configuration of the module from a file on the computer disk

Write configuration to file – button to save the current configuration of the module to a file on the computer disk

Factory settings – button for presetting the parameters on the tab with default values

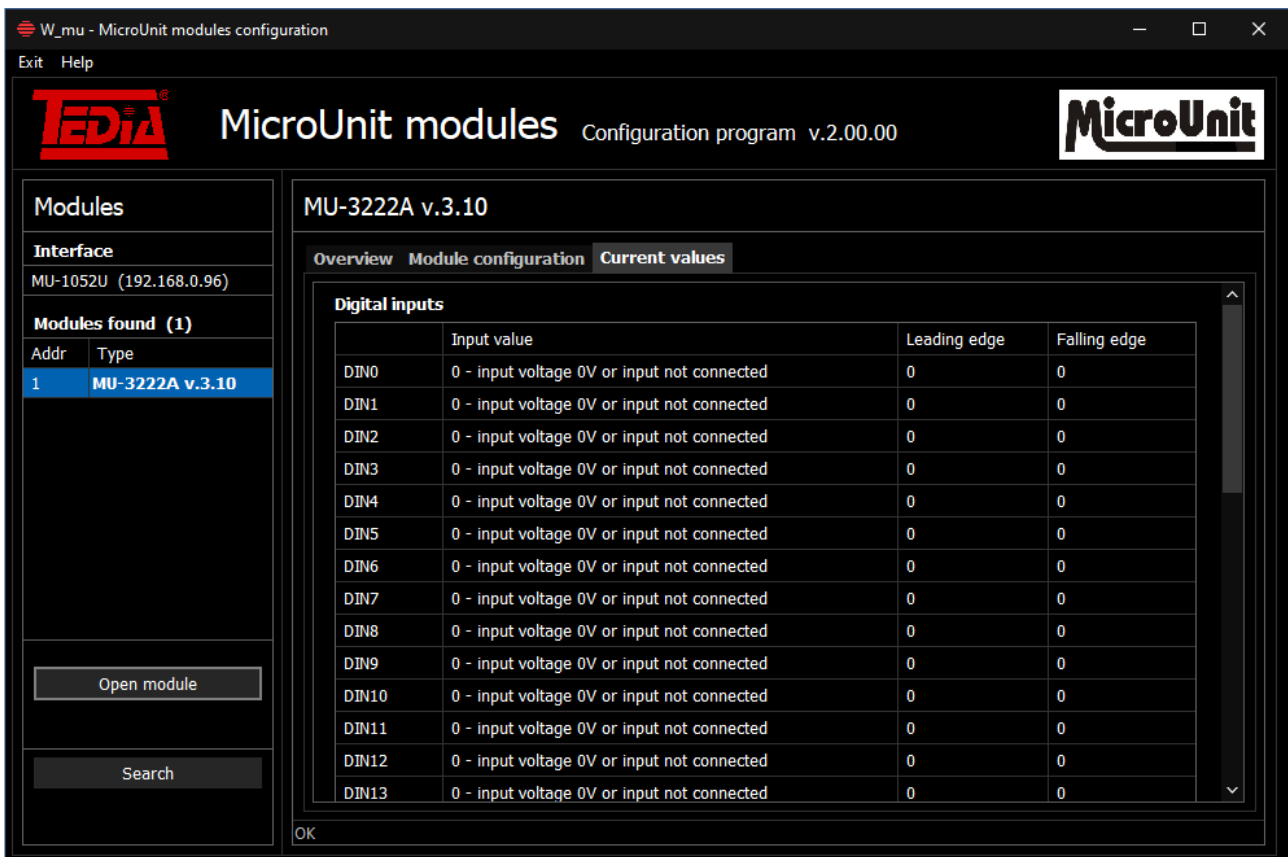
Read configuration from the module – button for loading the current configuration from the module's memory

Write the configuration to the module – button to write the configuration to the module's memory with the module's restart

Restart module – button to restart the module

Module configuration window - Current values tab.

Writing and periodic reading of module current values (specific current values are determined by module type).

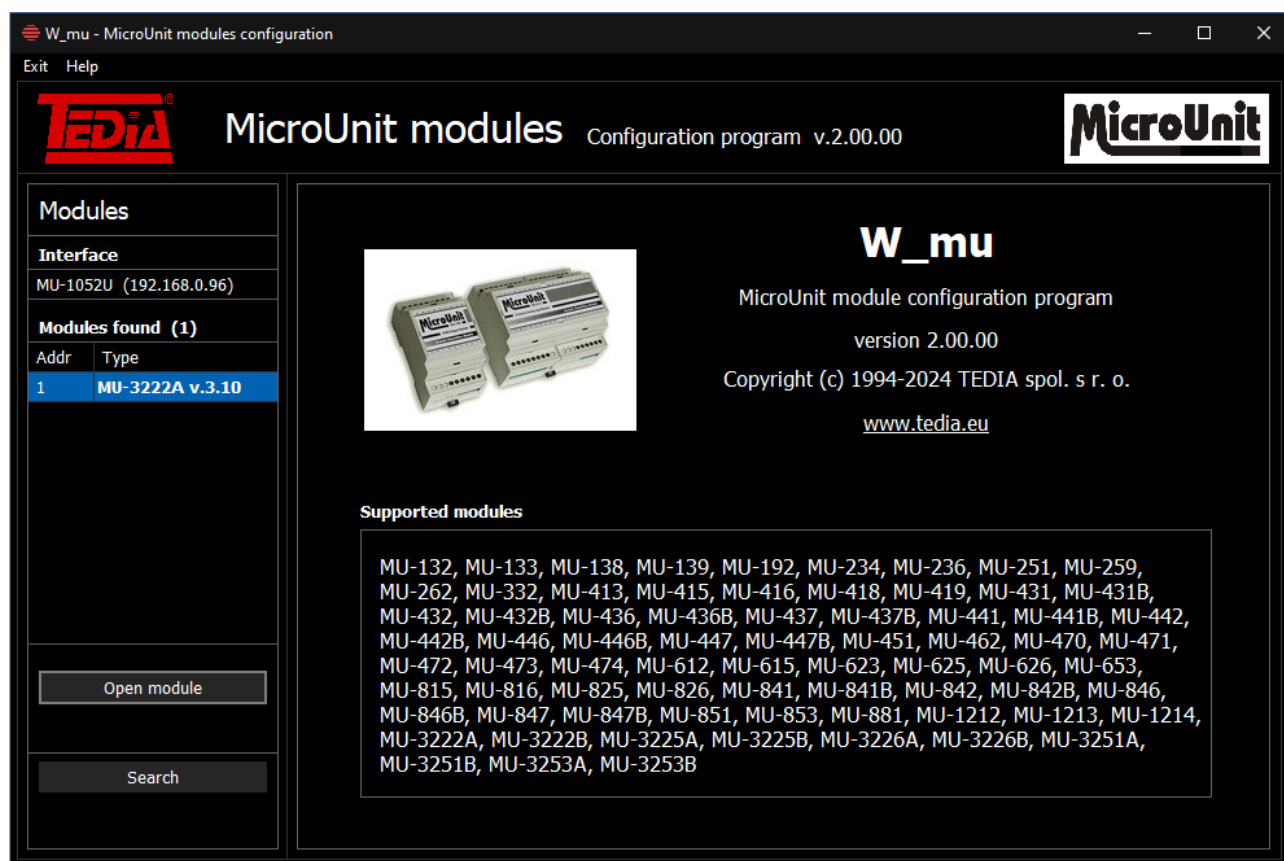


The screenshot shows the 'W_mu - MicroUnit modules configuration' window. The left sidebar contains a 'Modules' list with one entry: '1 MU-3222A v.3.10'. The main area displays the 'Current values' tab for this module. It features a table of digital inputs (DIN0 to DIN13) with columns for 'Input value', 'Leading edge', and 'Falling edge'. All input values are currently '0 - input voltage 0V or input not connected'.

	Input value	Leading edge	Falling edge
DIN0	0 - input voltage 0V or input not connected	0	0
DIN1	0 - input voltage 0V or input not connected	0	0
DIN2	0 - input voltage 0V or input not connected	0	0
DIN3	0 - input voltage 0V or input not connected	0	0
DIN4	0 - input voltage 0V or input not connected	0	0
DIN5	0 - input voltage 0V or input not connected	0	0
DIN6	0 - input voltage 0V or input not connected	0	0
DIN7	0 - input voltage 0V or input not connected	0	0
DIN8	0 - input voltage 0V or input not connected	0	0
DIN9	0 - input voltage 0V or input not connected	0	0
DIN10	0 - input voltage 0V or input not connected	0	0
DIN11	0 - input voltage 0V or input not connected	0	0
DIN12	0 - input voltage 0V or input not connected	0	0
DIN13	0 - input voltage 0V or input not connected	0	0

About window.

Information about the program and an overview of modules supported by the current version of the program.



W_mu - MicroUnit modules configuration

Exit Help

TEDIA MicroUnit modules Configuration program v.2.00.00 **MicroUnit**

Modules

Interface

MU-1052U (192.168.0.96)

Modules found (1)

Addr	Type
1	MU-3222A v.3.10

Open module

Search

W_mu

MicroUnit module configuration program

version 2.00.00

Copyright (c) 1994-2024 TEDIA spol. s r. o.

www.tedia.eu

Supported modules

MU-132, MU-133, MU-138, MU-139, MU-192, MU-234, MU-236, MU-251, MU-259, MU-262, MU-332, MU-413, MU-415, MU-416, MU-418, MU-419, MU-431, MU-431B, MU-432, MU-432B, MU-436, MU-436B, MU-437, MU-437B, MU-441, MU-441B, MU-442, MU-442B, MU-446, MU-446B, MU-447, MU-447B, MU-451, MU-462, MU-470, MU-471, MU-472, MU-473, MU-474, MU-612, MU-615, MU-623, MU-625, MU-626, MU-653, MU-815, MU-816, MU-825, MU-826, MU-841, MU-841B, MU-842, MU-842B, MU-846, MU-846B, MU-847, MU-847B, MU-851, MU-853, MU-881, MU-1212, MU-1213, MU-1214, MU-3222A, MU-3222B, MU-3225A, MU-3225B, MU-3226A, MU-3226B, MU-3251A, MU-3251B, MU-3253A, MU-3253B